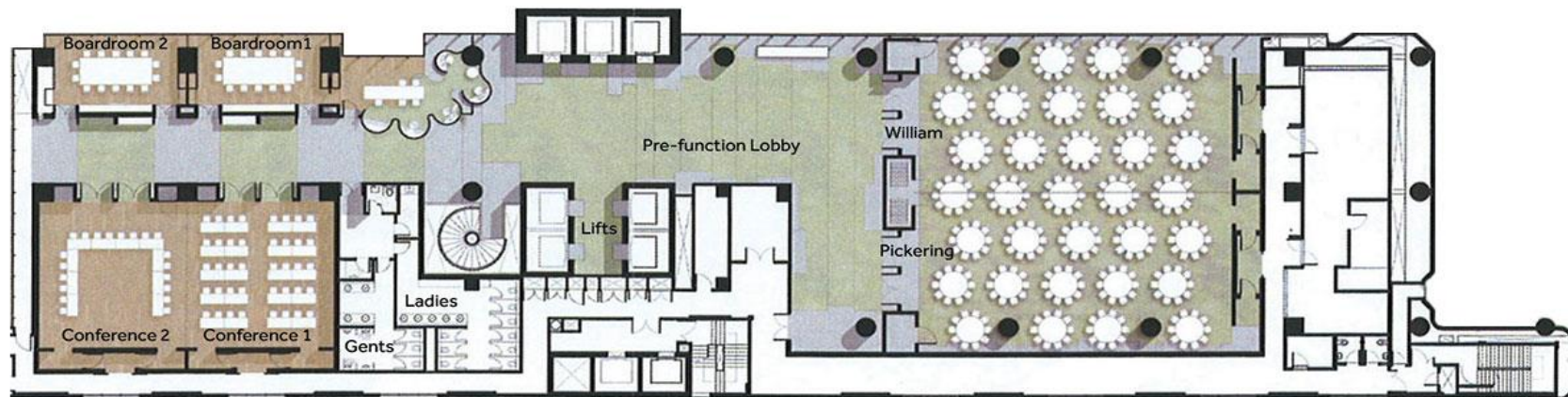


PARKROYAL

ON PICKERING, SINGAPORE

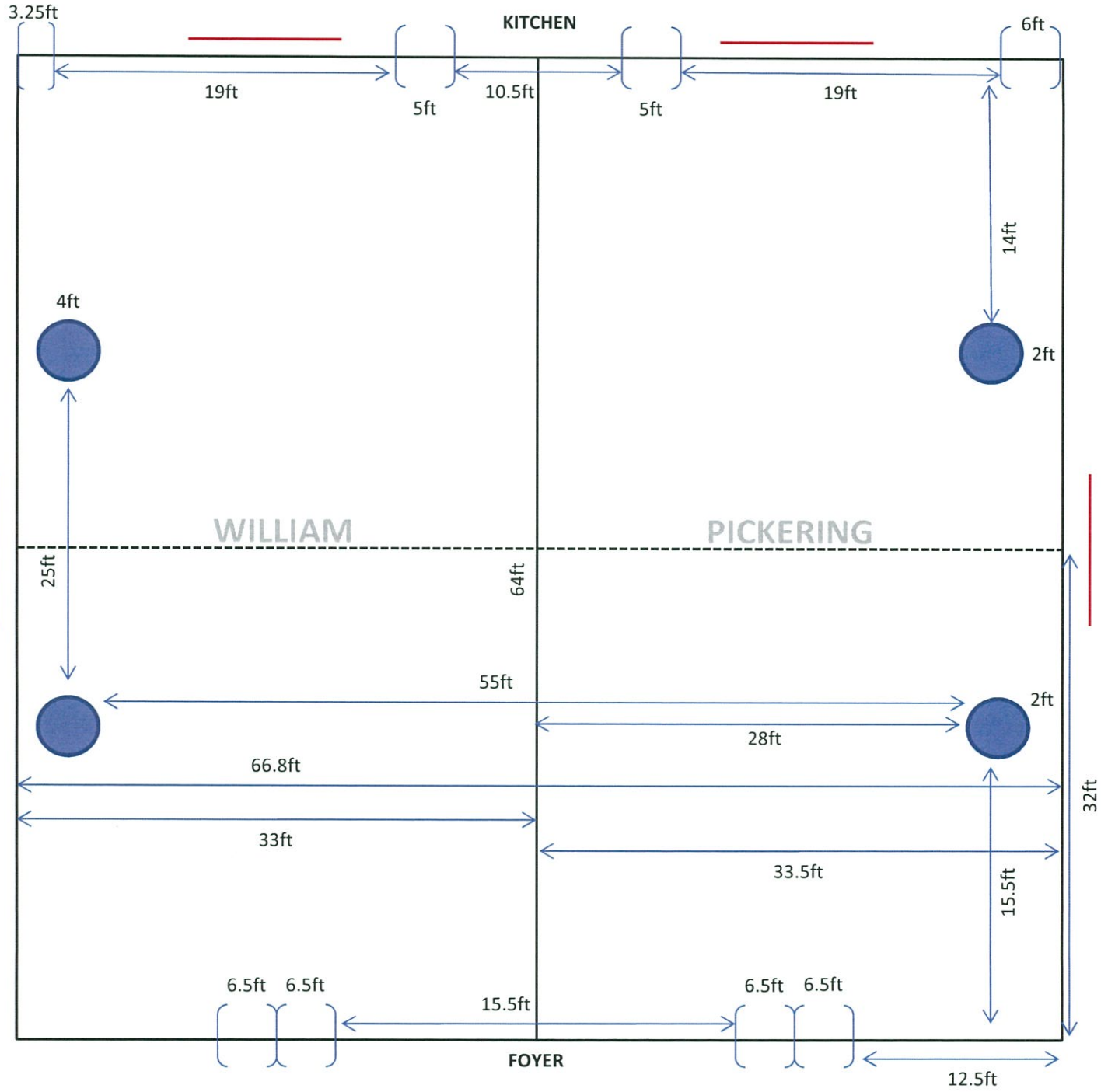
A PARKROYAL COLLECTION HOTEL

| FUNCTION ROOMS | MEETINGS | | | | BANQUET | | | | DIMENSIONS | | | |
|---|-------------------|-------------------------------|----------------|---------------------------|------------------|--------------------------------------|-------------------|-------------------|------------|--------|--------|-----------|
| | THEATRE | CLASSROOM (3pax per table) | CONF | U-SHAPE Double U-Shape | BANQUET | D&D | BUFFET | CKTL | WIDTH | LENGTH | HEIGHT | TOTAL |
| WILLIAM PICKERING BALLROOM Stage | 420 24 x 12 ft | 240 24 x 12 ft | 96 | 150 24 x 12 ft | 330 No Stage | 250 24 x 12 ft Excl Dancefloor | 150 24 x 12 ft | 325 24 x 12 ft | 20 m | 21 m | 5.6 m | 455 sqm |
| William | 150 | 108 | 48 | 42 | 120 | 100 | 100 | 150 | 20 m | 10.5 m | 5.6 m | 224 sqm |
| Pickering | 150 | 108 | 48 | 42 | 120 | 100 | 100 | 150 | 20 m | 11 m | 5.6 m | 231 sqm |
| Foyer | - | - | - | - | - | - | - | 100 | - | - | - | - |
| CONFERENCE ONE & TWO Stage | 168 18 x 8 ft | 108 18 x 8 ft | 50 No Stage | 45 18 x 8 ft | 120 18 x 8 ft | 100 18 x 8 ft Excl Dancefloor | 90 18 x 8 ft | 150 18 x 8 ft | 9 m | 9.7 m | 5.6 m | 207 sqm |
| Conference One | 72 | 60 | 18 | 27 | 60 | 50 | 50 | 65 | 9 m | 9.7 m | 5.6 m | 103.5 sqm |
| Conference Two | 72 | 60 | 18 | 27 | 60 | 50 | 50 | 65 | 9 m | 9.7 m | 5.6 m | 103.5 sqm |
| BOARD ROOM ONE | - | - | 12 | - | - | - | - | - | 4.6 m | 7.4 m | 5.6 m | 42 sqm |
| BOARD ROOM TWO | 25 | 21 | 16 | 14 | 20 | - | - | 25 | 4.6 m | 7.4 m | 5.6 m | 42 sqm |



NOTE: Floor Plan Not Drawn To Scale

William Pickering Ballroom



Ceiling height: 5.6 Meter (18.37ft)



Level 5 Terrace

