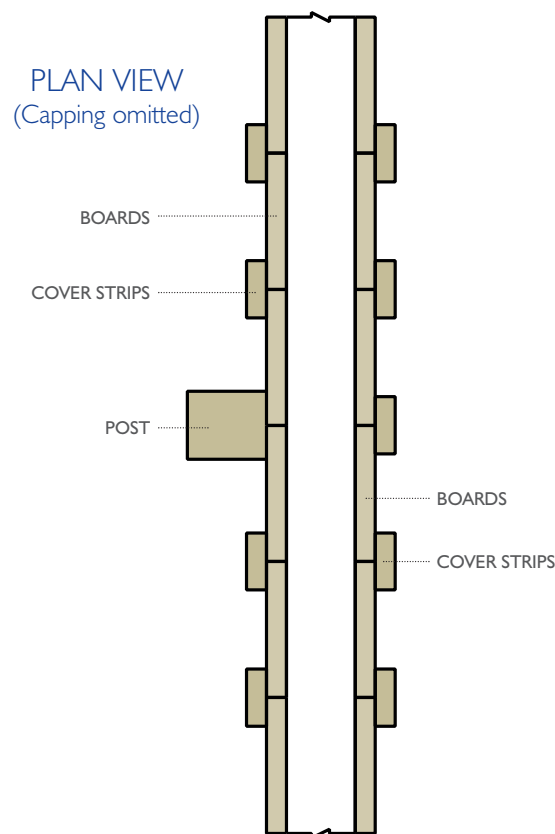
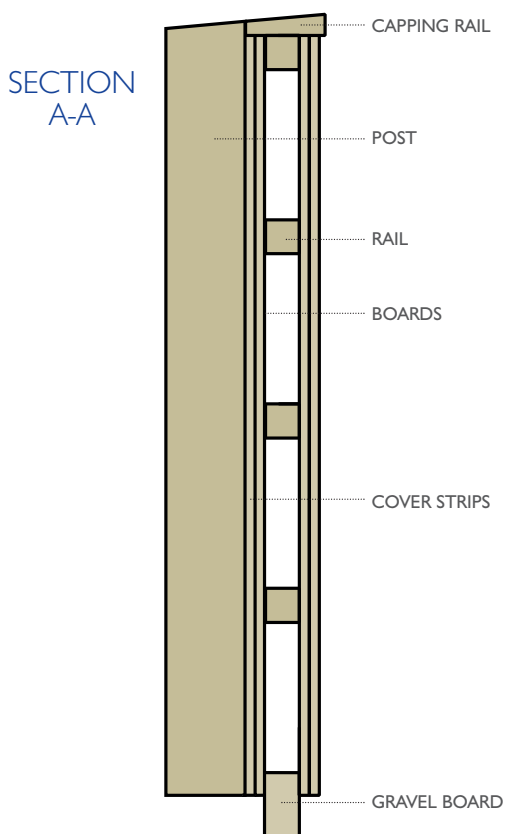
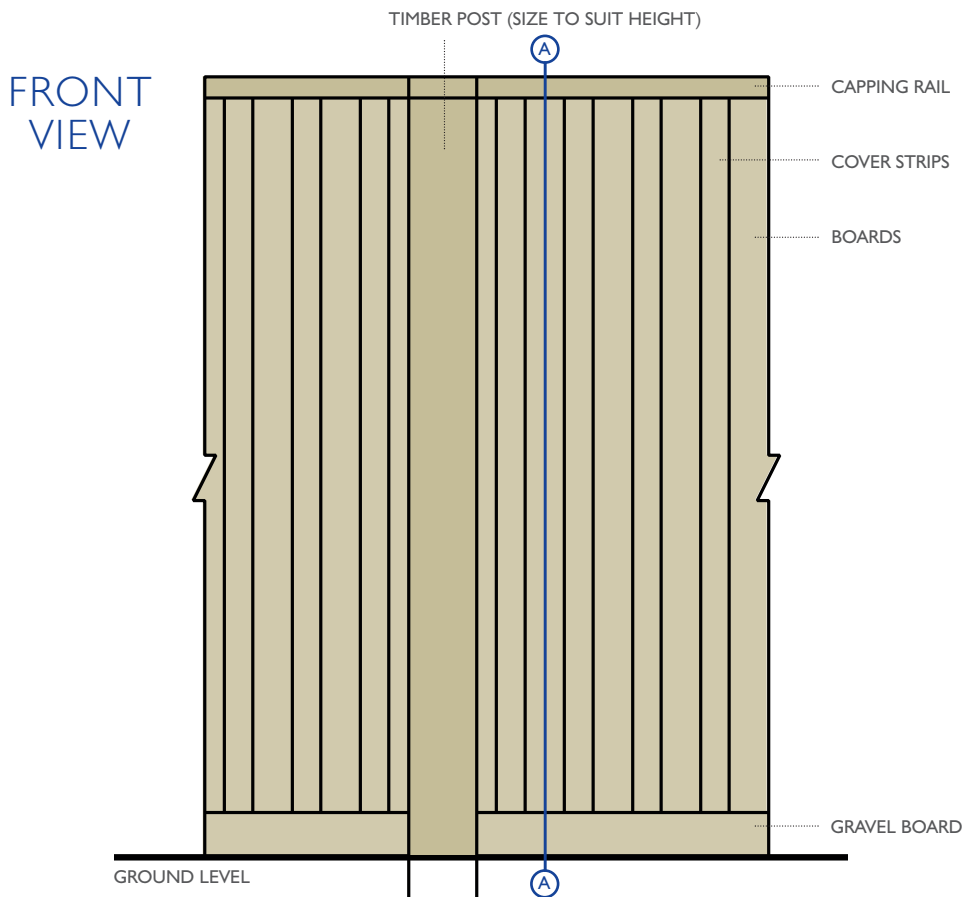


DOUBLE SIDED REFLECTIVE SOUND SCREEN
 FITTED TO TIMBER POSTS

AUGUST 2012

PLEASE NOTE:

1. CONFORMS AND TESTED TO BS EN 1793. ALSO TESTED AND COMPLIES TO BS EN 1794-1 AND BS EN 1794-2.
2. COMPLIES WITH HIGHWAYS SECTOR SCHEME 2C FOR THE PREFABRICATION OF ENVIRONMENTAL BARRIERS.
3. DOUBLE SIDED SOUND SCREEN FITTED TO TIMBER POSTS FOR ILLUSTRATION PURPOSES ONLY. STEEL POSTS CAN BE AN ALTERNATIVE.
4. STRUCTURAL CALCULATIONS MAY BE REQUIRED BY QUALIFIED PERSONS, NO RESPONSIBILITY CAN BE ACCEPTED BY USING THIS DESIGN WITHOUT PROFESSIONAL ADVICE.
5. DESIGN IN ACCORDANCE WITH SPECIFICATION FOR HIGHWAY WORKS CLAUSE 2504. TREATMENT TO SECTOR SCHEME 4.
6. HEIGHT OF SOUND SCREEN VARIABLE TO SUIT SPECIFIC LOCATIONS. POST CENTRES AT 3.0M UNLESS OTHERWISE SPECIFIED.



HALES, MARKET DRAYTON
 SHROPSHIRE, TF9 2PP
 TEL: **01630 653359**
 FAX: **01630 658859**
www.halesawmills.co.uk



DOUBLE SIDED REFLECTIVE SOUND SCREEN
 FITTED TO TIMBER POSTS

BS EN 1793-2: 1998

Acoustics - Road traffic noise reducing devices

Test method for determining the acoustic performance

SIZE: 8.64m²

SOURCE ROOM

Volume: 136m²
 Condition: clean
 Type: small reverberation room
 Location: acoustic transmission suite

RECEIVING ROOM

Volume: 220m²
 Condition: clean
 Type: large reverberation room
 Location: acoustic transmission suite

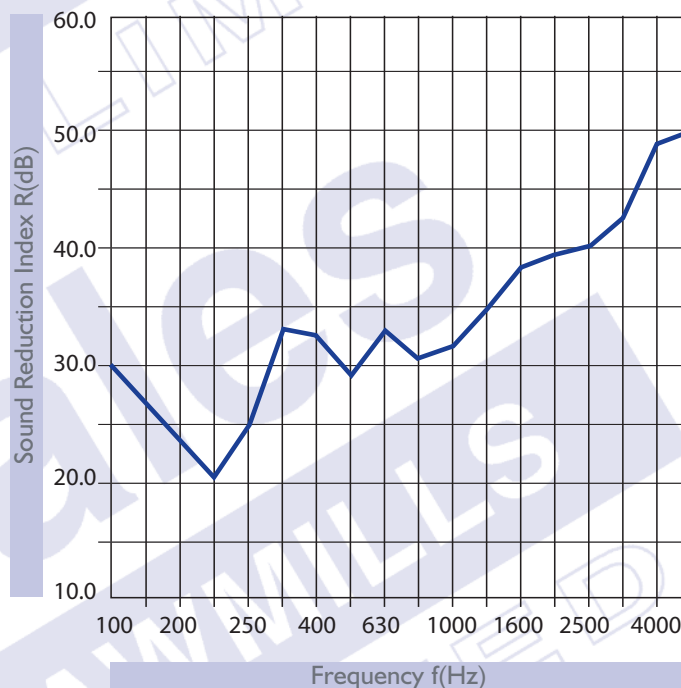
TEMPERATURE: 20.0°C

HUMIDITY: 50.2%

DL_R: 31

CATEGORY: B3

| FREQUENCY HZ | R |
|-----------------|------|
| 100 | 29.6 |
| 125 | 26.9 |
| 160 | 23.7 |
| 200 | 20.9 |
| 250 | 25.1 |
| 315 | 33.1 |
| 400 | 32.8 |
| 500 | 29.0 |
| 630 | 33.0 |
| 800 | 30.8 |
| 1000 | 31.8 |
| 1250 | 35.0 |
| 1600 | 37.8 |
| 2000 | 39.3 |
| 2500 | 40.0 |
| 3150 | 42.5 |
| 4000 | 48.7 |
| 5000 | 50.1 |



Test results for HALES SAWMILLS LTD - DOUBLE SIDED REFLECTIVE SOUND SCREEN, issued by:

University of Salford (Acoustics Test Laboratory)

UKAS accredited test laboratory No. 1262

Test reference number: AC09/215/05

HALES, MARKET DRAYTON
 SHROPSHIRE, TF9 2PP
 TEL: **01630 653359**
 FAX: **01630 658859**
www.halesawmills.co.uk

