

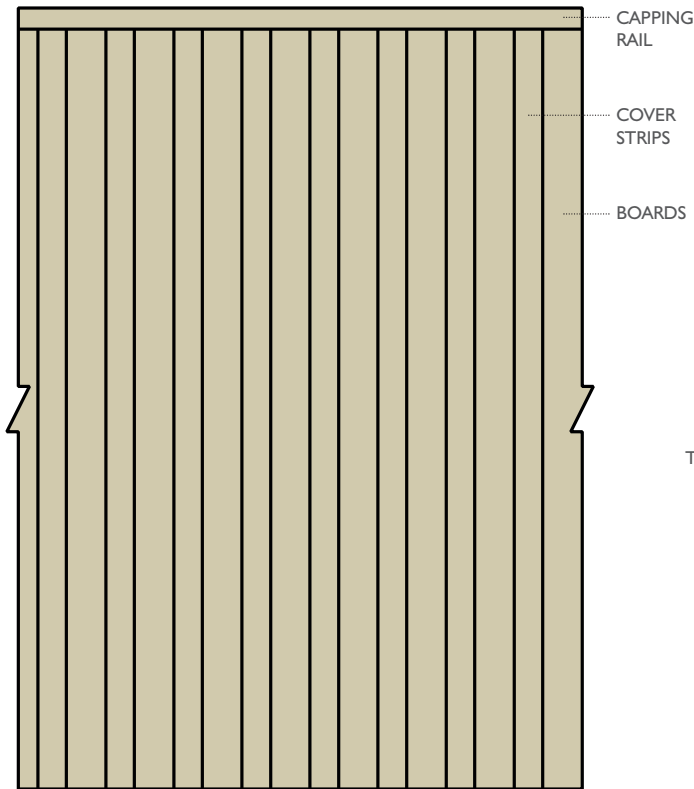
REFLECTIVE SOUND SCREENS

AUGUST 2016

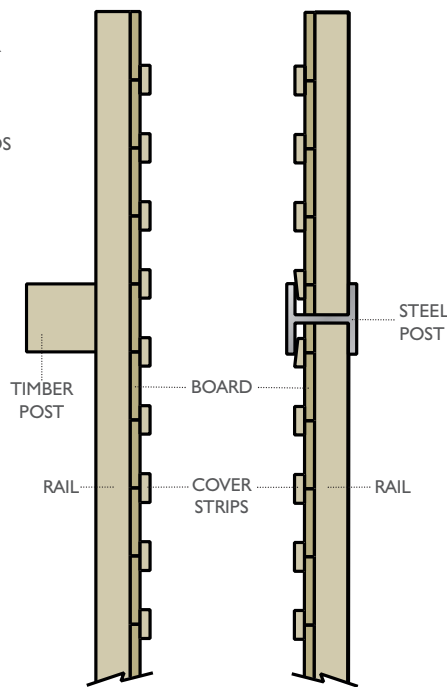
PLEASE NOTE:

1. STRUCTURAL CALCULATIONS MAY BE REQUIRED BY QUALIFIED PERSONS, NO RESPONSIBILITY CAN BE ACCEPTED BY USING THIS DESIGN WITHOUT PROFESSIONAL ADVICE.
2. DESIGN IN ACCORDANCE WITH SPECIFICATION FOR HIGHWAY WORKS CLAUSE 2504. TREATMENT TO SECTOR SCHEME 4.
3. REFLECTIVE SOUND SCREENS CAN BE FITTED TO STEEL OR TIMBER POSTS AS ILLUSTRATED.
4. HEIGHT OF SOUND SCREEN VARIABLE TO SUIT SPECIFIC LOCATIONS. POST CENTRES AT 3.0M UNLESS OTHERWISE SPECIFIED.
5. CONFORMS AND TESTED TO BS EN 1793. ALSO TESTED AND COMPLIES TO BS EN 1794-1 AND BS EN 1794-2.
6. COMPLIES WITH HIGHWAYS SECTOR SCHEME 2C FOR THE PREFABRICATION OF ENVIRONMENTAL BARRIERS.
7. AVERAGE DENSITY 26.4 KG/M² (EXCLUDING POSTS)

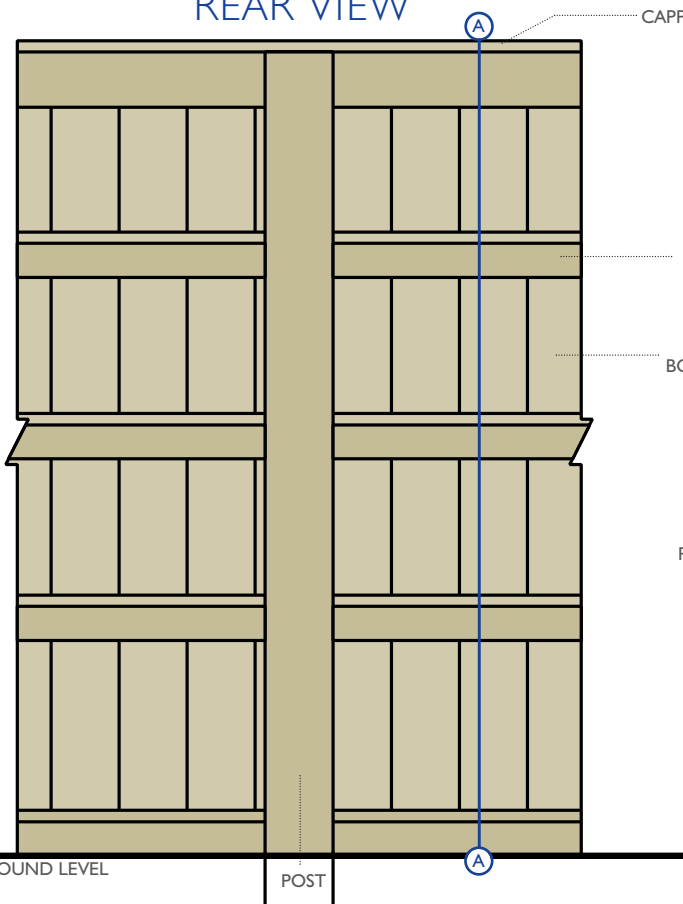
FRONT VIEW



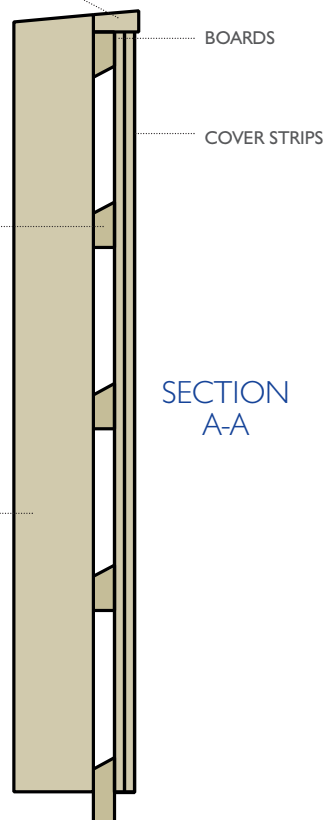
PLAN VIEW
 (Capping omitted)



REAR VIEW



SECTION A-A



HALES, MARKET DRAYTON
 SHROPSHIRE, TF9 2PP
 TEL: **01630 653359**
 FAX: **01630 658859**
www.halesawmills.co.uk



REFLECTIVE SOUND SCREEN

BS EN 1793-2: 1998

Acoustics - Road traffic noise reducing devices

Test method for determining the acoustic performance

SIZE: 8.64m²

SOURCE ROOM

Volume: 136m²
 Condition: clean
 Type: small reverberation room
 Location: acoustic transmission suite

RECEIVING ROOM

Volume: 220m²
 Condition: clean
 Type: large reverberation room
 Location: acoustic transmission suite

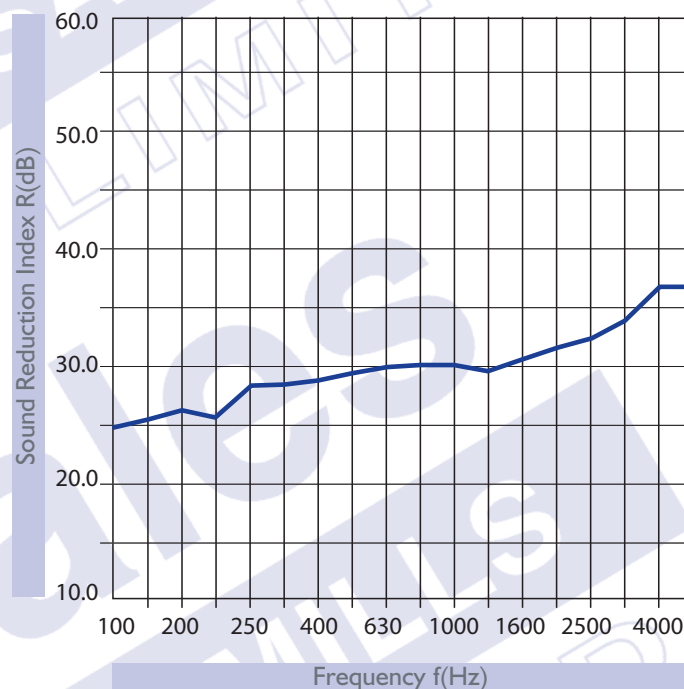
TEMPERATURE: 17.8°C

HUMIDITY: 58.6%

DL_R: 30

CATEGORY: B3

FREQUENCY HZ	R
100	24.7
125	25.3
160	26.3
200	25.8
250	28.5
315	28.4
400	29.0
500	29.6
630	30.0
800	30.1
1000	29.8
1250	29.7
1600	30.6
2000	31.6
2500	32.1
3150	33.7
4000	36.9
5000	37.1



Test results for HALES SAWMILLS LTD - REFLECTIVE SOUND SCREEN, issued by:

University of Salford (Acoustics Test Laboratory)

UKAS accredited test laboratory No. 1262

Test reference number: AC09/215/06

HALES, MARKET DRAYTON
 SHROPSHIRE, TF9 2PP
 TEL: **01630 653359**
 FAX: **01630 658859**
www.halesawmills.co.uk

