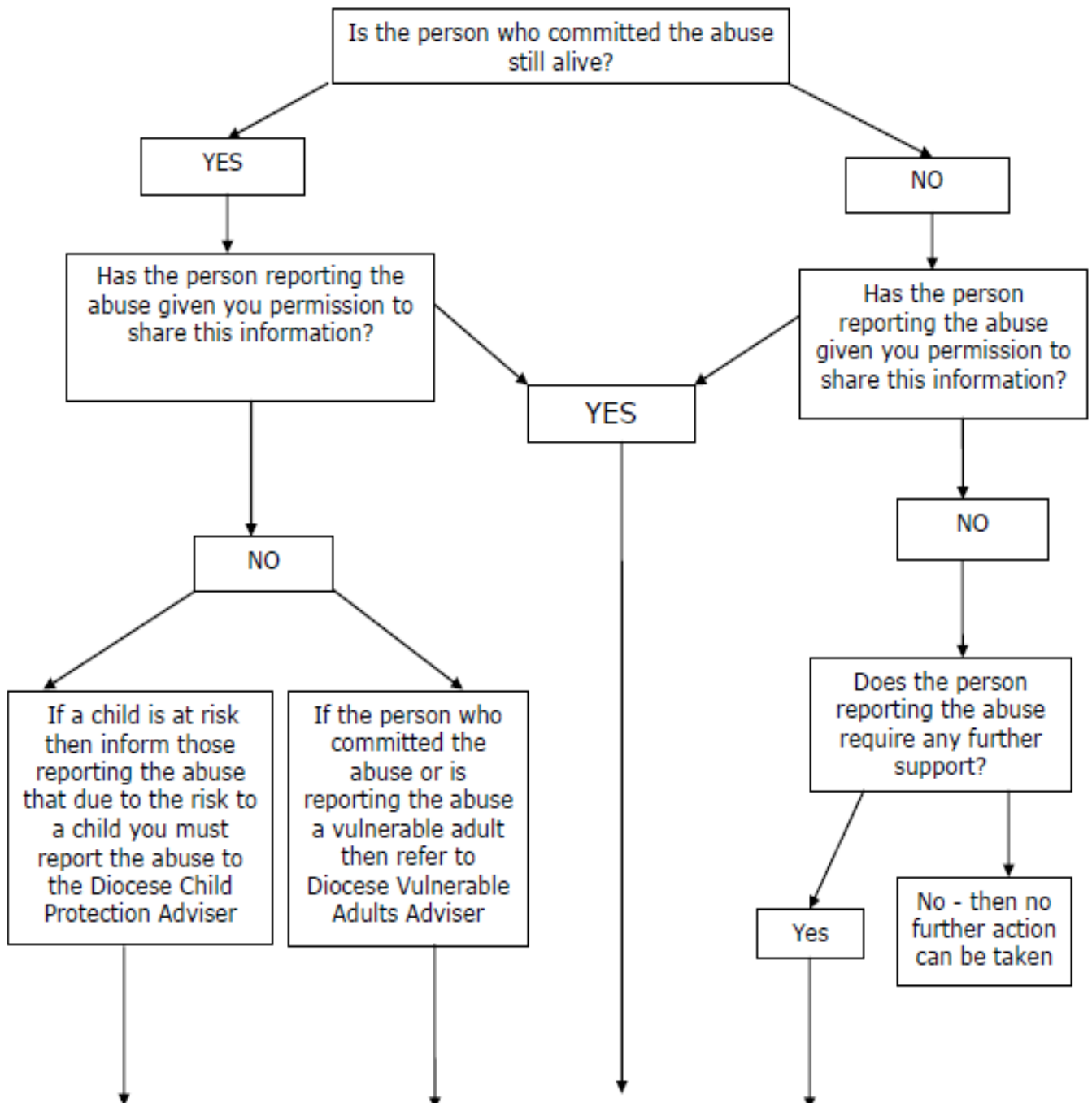


# Dealing With Historic Abuse Referral Flow Chart

## Historic Abuse Reported by an Adult



**REFER TO DIOCESAN SAFEGUARDING ADVISER**

**Contact Details**  
Diocesan Safeguarding Adviser – Beth Miller  
M: 07968 034075  
E: [beth@bethmillerisw.co.uk](mailto:beth@bethmillerisw.co.uk)