



**Halifax, Huddersfield,
Bradford and District**
Charity No. 225575

WILLING TO CARE

WHEN YOU'RE NOT THERE

Sign up for FREE and put
your mind at ease



We know that pet owners worry about leaving their pets behind when they die and so it is important to think about future provision for your pet.

The RSPCA Halifax, Huddersfield, Bradford and District Branch can help look after your pets once you are no longer there.

The Willing to Care Scheme

...is for any persons over the age of 18 who are concerned about the welfare of their dog or cat after their death and requires the peace of mind that their pet will be rehomed with loving new owners.

The Willing to Care Scheme...

How does the scheme work?



- You must specify in your will that you are leaving your pet to the RSPCA Halifax, Huddersfield, Bradford and District Branch under the 'Willing to Care' scheme.

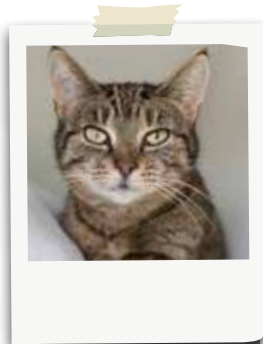
- Members who are taken into a nursing home or feel unable to look after their pet, you can sign them into our care for rehoming and they will be given priority entrance.

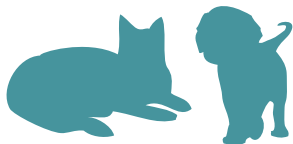
- On being informed of a members death, the Branch will arrange to care for and if necessary, collect your beloved pet.

- Using the answers on your pet's questionnaire (updated annually) we will ensure that there is minimal stress to your pet by following where possible his/her likes dislikes and routines.

- If your pet is over 10 years of age, we are especially well equipped to rehome him or her. The Branch has an award winning Elderly Animal Rehoming Scheme so we will automatically place your pet on this Scheme and look after him or her in a foster home until adoption.

- We will ensure your pet is adopted as soon as possible in a suitable home for the rest of his/her life. Careful home checks will be carried out to ensure we have the right home for your special pet.





How do I become a member?

- Simply complete the application form and return it to the Branch.
- A welcome pack including a pet questionnaire will be sent to you. Please complete a questionnaire for each pet and return it to us.
- On receipt of your questionnaire and after acceptance onto the Scheme, a membership card will be issued.
- Ensure you have left clear instructions in your Will.

Unfortunately we are unable to accept dogs/cats that have bitten people as we would not be able to place them safely in suitable homes.

WILLING TO CARE APPLICATION FORM

Title:.....

Forename/Initial:.....

Surname:.....

Address:

.....

.....

City/Town:

Postcode:

Email:

Telephone:.....

Mobile:.....

Please state number wishing to join the Scheme

DOG CAT

Please tick if you would like to receive further information on the following (✓)

- E.A.R.S THE ELDERLY ANIMAL REHOMING SCHEME
- THE TWILIGHT SCHEME
- THE DOGS' DAY OUT SCHEME
- SPONSOR AN ANIMAL SPACE
- LEAVING A WILL OR LEGACY

Please fill in the form & return to the RSPCA Halifax, Huddersfield, Bradford & District Branch, Wade Street, Halifax HX1 1SN

All personal information supplied by you on this form will be processed by the RSPCA Halifax, Huddersfield, Bradford & District Branch (charity No 225575). Our privacy policy is available on request. We'd love to keep you updated about our fundraising activities, products and ways in which you can support us to help animals. Please tell us how you would like to hear from us.

Post Telephone Email Text I would prefer not to be contacted

About Our Branch

The RSPCA Halifax, Huddersfield, Bradford and District Branch rescues, rehabilitates and rehomes hundreds of animals each year in the Kirklees, Calderdale and Bradford area. Each branch of the RSPCA is an independent registered charity separate from the National RSPCA, with a local board of trustees overseeing the management of the Branch.

We have to raise our own funds to keep our Animal Centre running and with our annual running cost we rely heavily on the generosity and support of the local community.

We have a non-destruction policy of healthy animals and aim to find suitable, caring and permanent homes for all the animals brought into the centre.



Miaow

Each year we re-home over
800 ANIMALS
into loving homes

Some may have been neglected but many are older or their owners have sadly passed away.



Can You re-home me?

There are many ways in which you can support us:

- Remember the RSPCA Halifax, Huddersfield, Bradford & District Branch in your Will.
- Ask for donations for our branch in memory of a loved one or in lieu of flowers.
- Make a regular donation by Standing Order.
- Become one of our Friends of Animals in Need (F.A.N.S).
- Join our Twilight Scheme and help elderly pets to have a second chance.
- Adopt an old animal on our E.A.R.S Scheme.
- Sponsor an Animal Space.
- Support our Charity Shops - every item donated or bought makes a difference.
- Support us through Gift Aid which gives us 25% more at no cost to you.
- Join our team of cat and dog fosterers or home visitors.



Charity No. 225575

RSPCA Halifax, Huddersfield, Bradford and District Branch

Wade Street, Halifax, West Yorkshire HX1 1SN
Telephone: 01422 365628

email:enquiries@rspcahalifaxhuddersfieldbradford.org.uk

NATIONAL RSPCA 24HR HELPLINE: 0300 1234 999



@RSPCAHalifaxHudds



@RSPCAHx



@rspca_halifaxhuddsbradford



rspcahalifaxhud